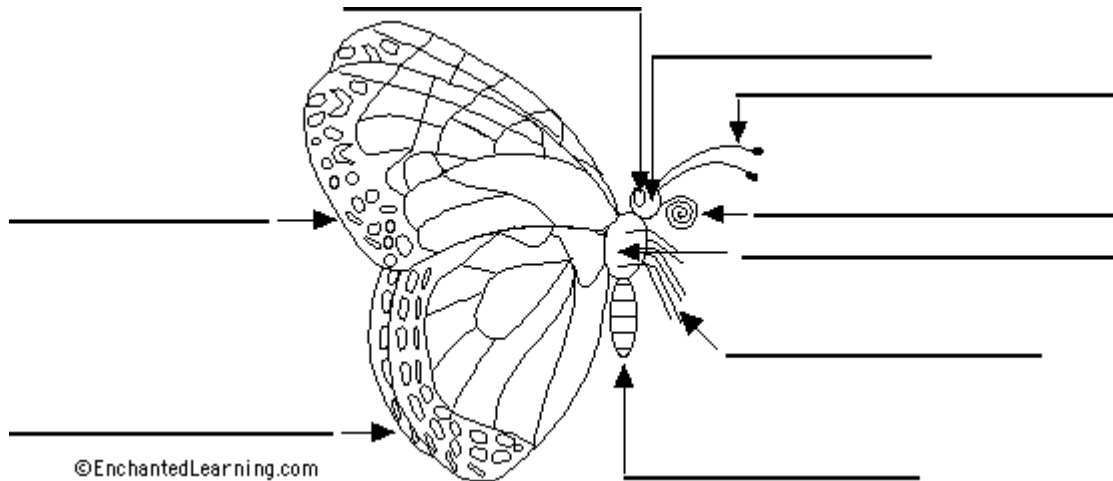


Throughout the garden, you will see butterflies. Some butterflies like the sunny open spaces, and others prefer the shaded wooded areas. What habitat are you in? What butterflies do you see? What other creatures can you see or hear?



Label the butterfly with the body parts named below.

### Body Parts Definitions

**Abdomen** – Contains the guts!

**Hind wing** - Lower or back wing. There are two.

**Antenna** - Attached to the head, used for smell, taste and balance.

**Leg** - All adult butterflies have six legs. The two forelegs of the monarch butterfly are tiny.

**Compound Eye** – See color and motion with eyes made of many hexagonal lenses.

**Proboscis** - Butterflies sip nectar with this mouthpart.

**Fore wing** -Front or upper wings. There are two fore wings

**Thorax** - The legs and wings attach to the thorax.

**Head** - Holds the brain, eyes, the proboscis, and antennae.

In the fall, look for the orange-and-black monarch butterfly. It may be flying to Mexico, drinking nectar, basking in the sun, or resting with its wings closed. Find a butterfly. What is its behavior?

In the spring, monarch butterflies are returning from Mexico. In addition to flying, resting, basking and feeding, spring butterflies court and mate. Look for caterpillars feeding on milkweed leaves.