

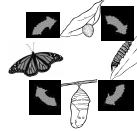


Butterflies in Your Classroom



LANGUAGE ARTS

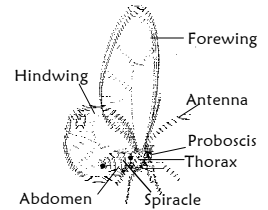
Read the story *Where Butterflies Grow* by Joanne Ryder and challenge your students to imagine how it would feel to be transformed through each stage of metamorphosis. Encourage your students to pretend they are the creature in the story and have them keep a journal of their experience with metamorphosis.



SCIENCE

Collect a caterpillar and its favorite food plant and observe metamorphosis in your classroom!

- Give your students a first hand look at the butterfly's life cycle.
- Explore the parts and functions of a butterfly's body.
- When the butterfly emerges, have your students draw the butterfly and label the parts they see.

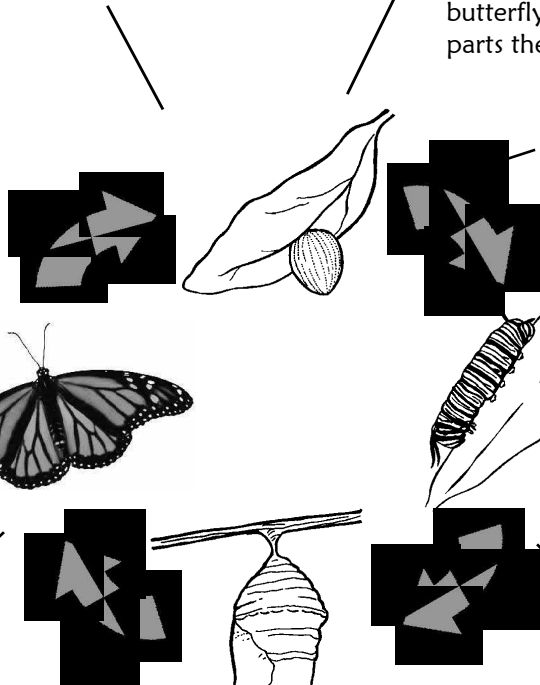


MATH

Symmetry and patterns patterns patterns



Can you predict the shape based on the pattern? Tape a picture of a butterfly to a piece of paper as shown here. Now draw the covered part based on the pattern seen in the exposed butterfly. Compare your drawing to the real picture to see if the butterfly is truly symmetrical.



ART

Make your own balancing butterfly.

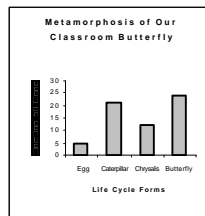
- Materials: posterboard butterfly pattern markers or crayons scissors tape 2 pennies per student
- *Trace the butterfly pattern on the posterboard. Color and cut out your butterfly. Bend the butterfly at the thorax so the wings stand up. Tape a penny to the tip of each forewing.



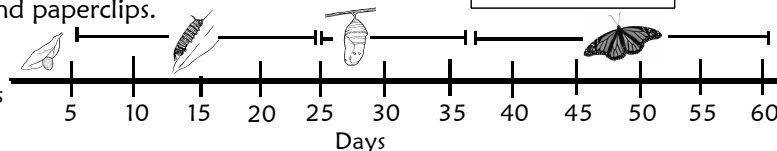
SOCIAL STUDIES

Discover the use of timelines and graphs as your students chart the metamorphosis of their classroom creature. In their "Butterfly Journal" students can keep track of the number of days the creature is in each stage of the life cycle.

- Have the students work together to make a graph showing this information.
- Take pictures of each stage of the life cycle and create a life-size timeline with the pictures, string and paperclips.



Timeline of metamorphosis



GEOGRAPHY

Explore the states and countries in North America as you examine the migration route of the monarch butterfly. Your students can map the migration as the monarchs come right through Texas!



The Botanical Research Institute of Texas, 509 Pecan St., Fort Worth, TX (817) 332-4441; fax (817) 332-4112; www.brit.org