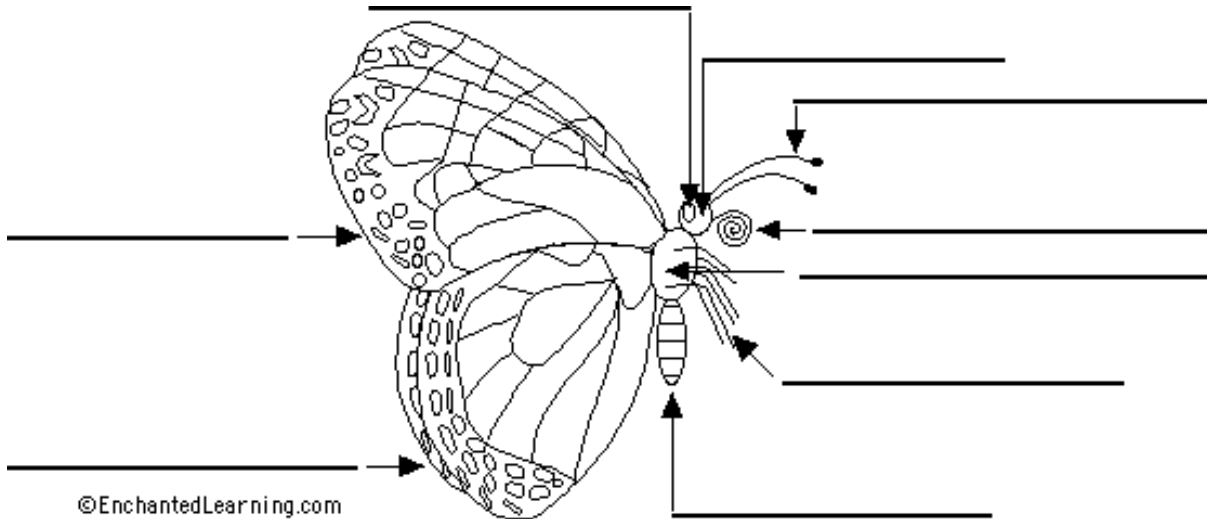


Student Butterfly Page

Throughout the Botanic Garden, you will see butterflies. Some butterflies like the sunny open spaces, and others prefer shaded, wooded areas. Which habitat are you in? What butterflies do you see? What other creatures can you see or hear?



©EnchantedLearning.com

Label the butterfly with the body parts named below.

Body Part Definitions

Abdomen – Contains the guts!

Antenna – Attached to the head, used for smell, taste and balance.

Compound Eye – See color and motion with eyes made of many hexagonal lenses.

Fore wing - The two front or upper wings.

Head – Holds the eyes, antennae & the proboscis.

Hind wing – The two back or lower wings.

Leg - All adult butterflies have six legs. The two forelegs of the monarch are tiny.

Proboscis - Adult butterflies sip nectar with this mouth part.

Thorax - The legs and wings attach to the thorax.

In the spring, look among the flowers for feeding butterflies. You may see other insects!

Try to find butterflies that match these descriptions:

- An orange and yellow (sulphur)
- One with red marks on its wings (admiral)
- Has a long "nose" (snout)
- Orange and black- hint: has been in Mexico! (monarch)