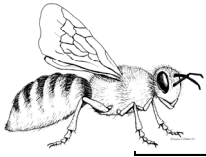
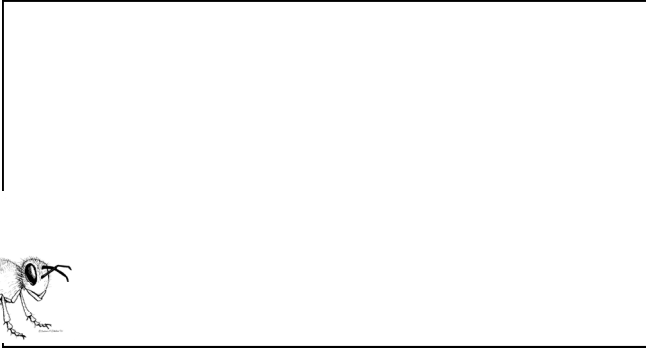


Observe Pollinators in the Garden

1. Look closely at one flower in the garden. Draw what you see.



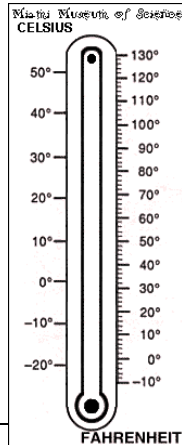
2. Use the bee glasses and draw what a bee sees on your flower.
3. Sit quietly and observe your flower. Does a pollinator come to visit?

Circle the pollinators you see:

bee butterfly wasp hummingbird other

Think Like a Scientist:

1. Where do pollinators get energy to fly?
2. Which pollinator do you see most outdoors today, bees or butterflies?
3. Why are we seeing more butterflies inside the conservatory than out in the garden?
Clue: check the temperature outdoors.
4. How does the outside temperature compare to the temperature inside the conservatory?



Butterflies in the Garden

Fort Worth Botanic Garden, Fort Worth Garden Club,
Fort Worth Botanical Society,
Botanical Research Institute of Texas

Butterflies in the Garden

Fort Worth Botanic Garden, Fort Worth Garden Club,
Fort Worth Botanical Society,
Botanical Research Institute of Texas

March, 2008

This journal belongs to _____

Discovery Guide

Think Like a Scientist

1. A scientist who studies plants is a **botanist**.
What does a **lepidopterist** study?
What would **you** like to study?
2. The USDA has rules that must be followed for bringing butterflies from other countries to the U.S. How do these rules protect our native butterflies?
How do the rules in the conservatory protect **you**?
3. Have you ever observed butterfly behavior?
What did you see?
What was the butterfly doing?

Discover the “Partners in Pollination” Exhibit

The exhibit tells a story about plants and pollinators. Find the answers to these questions.

If you were a pollinator, why would you want to visit a flower?

Clue: see panel #1 to find out why pollinators depend on plants.

If you could be a pollinator, which one would you like to be? Why?

Clue: see panels #2 -5

If you were a flower, what would you do to make sure a pollinator would come to visit you?

Clue: see panel #2 and use the bee glasses to find out what the bees see on the flowers.

What do pollinators use for food to give them energy to fly?

Clue: see panel # 4 to find out how hummingbirds get their energy from flowers

What is one food you love that you wouldn't have without pollinators?

Clue: see panels # 2, Thanks Bees!, or panel# 5, Thanks Bats!, or panel #6, What's in it for Me?

What can you do to help pollinators?

Clue: How can I be a 'Pollination Partner', panel #6.

Explore Butterflies in the Conservatory

1. Find an emergence box with butterflies emerging from the chrysalis. Look for a chrysalis with gold spots.

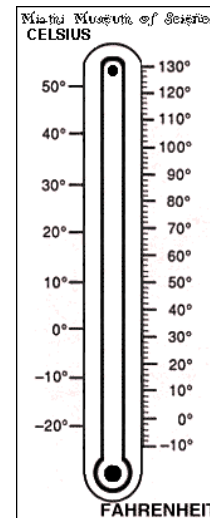
Question: What kind of butterfly emerges from this chrysalis?



Monarch

2. Find flowers that butterflies like best.

Question: Why are butterflies attracted to these flowers?



3. Find the thermometer and record the temperature of the conservatory.

Question: Why do you think the plants and the butterflies need this temperature?

4. Find a butterfly with wings spread in the light.

Question: What is it doing?

5. Find a butterfly roosting in a dark place.

Question: Why do butterflies roost?

6. What other things are butterflies visiting?

Question: What is it on? Why is it there?

7. Which is your favorite butterfly? Why?

Challenge: The radiometer in the garden is fast moving with high solar energy and slow moving with low solar energy. How does this affect butterfly behavior?